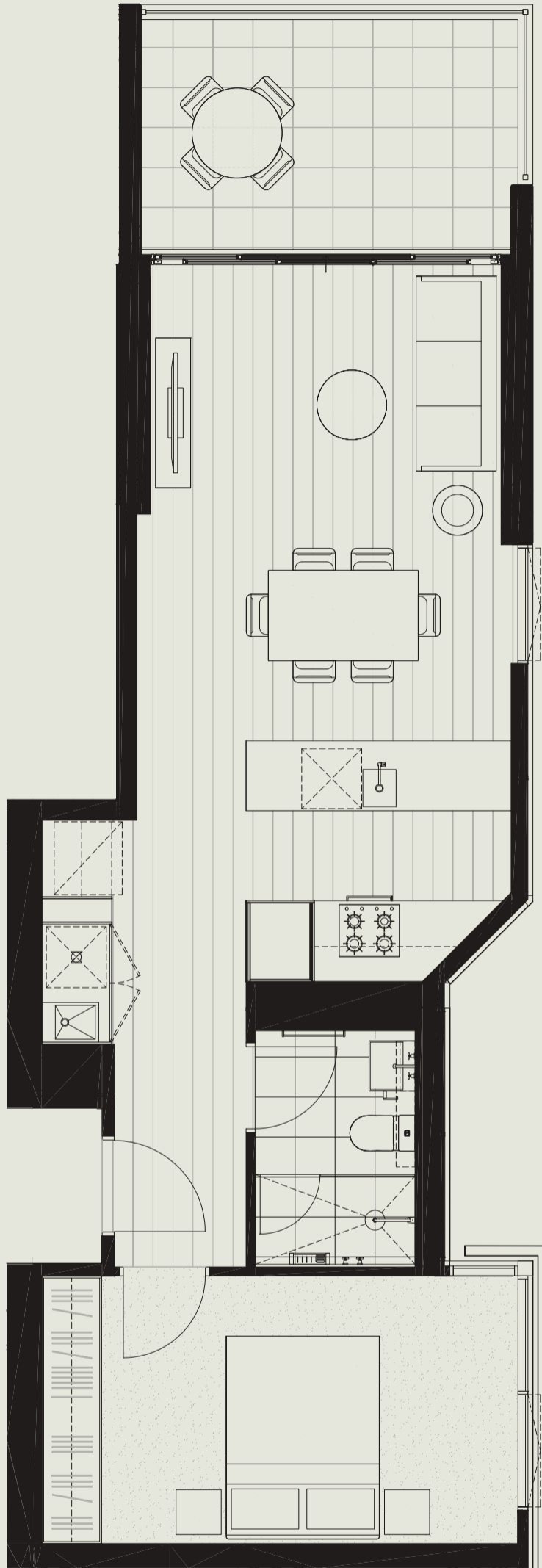


Alfred - Level 07 - 26

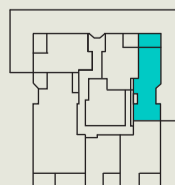


# APT.01

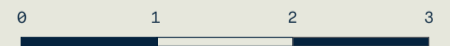
Bedroom	1
Bathroom	1
Carspace	
Internal	55.40M <sup>2</sup>
External	9.80M <sup>2</sup>
<b>TOTAL</b>	<b>65.20M<sup>2</sup></b>



St Pauls Terrace



Alfred Place



The information in this document has been produced for advertising and information purposes only and is not intended to form part of any enforceable agreement at law. All reasonable care has been taken in preparing this document, however no guarantee, warranty or representation is given by St. Pauls FV Pty Ltd or any of its agents or consultants ("Developer") that information contained in this document is correct, accurate or reliable. Interested parties should undertake their own enquiries. Plans, renders and drawings are intended only as a guide and an aide to further investigations by potential purchasers. Any areas shown are indicative and approximate only. Final areas and layouts are subject to design changes, required governmental approvals and final survey. Layouts, schedules of finishes and inclusions may change in accordance with any contract for sale and related documents. To the maximum extent permitted by law, the Developer does not accept any responsibility for any inaccurate or misleading information in, or for any omission from, the material contained in this document. Ultimately, potential purchasers must make their own enquiries and rely on their own judgment and independent advice.